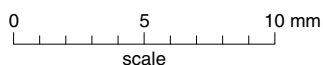
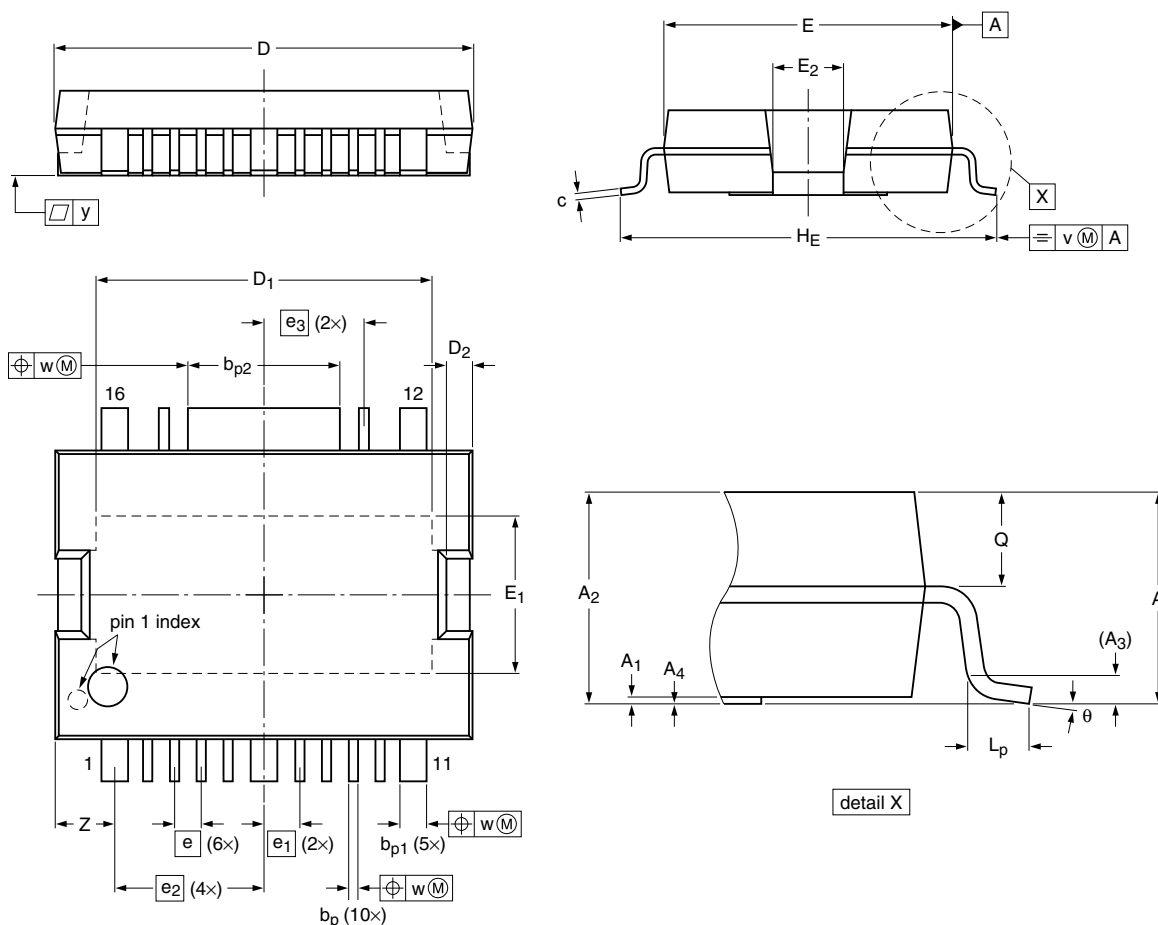


HSOP16: plastic, heatsink small outline package; 16 leads

SOT822-1



Dimensions

Unit ⁽¹⁾		A	A ₁	A ₂	A ₃	A ₄	b _p	b _{p1}	b _{p2}	c	D ⁽¹⁾	D ₁	D ₂	E ⁽¹⁾	E ₁	E ₂	e	e ₁	e ₂	e ₃	H _E	L _p
mm	max	3.6	0.2	3.5	0.35	0.06	0.43	1.09	5.87	0.32	16.0	13.0	1.1	11.1	6.2	2.9	1.02	1.37	5.69	3.81	14.5	1.1
	nom																					
	min		0	3.2		−0.06	0.28	0.94	5.72	0.23	15.8	12.6	0.9	10.9	5.8	2.5					13.9	0.8

Note

1. Plastic or metal protrusions of 0.25 mm maximum per side are not included

sot822-1_po

Outline version	References				European projection	Issue date
	IEC	JEDEC	JEITA			
SOT822-1						07-02-08 10-10-20