

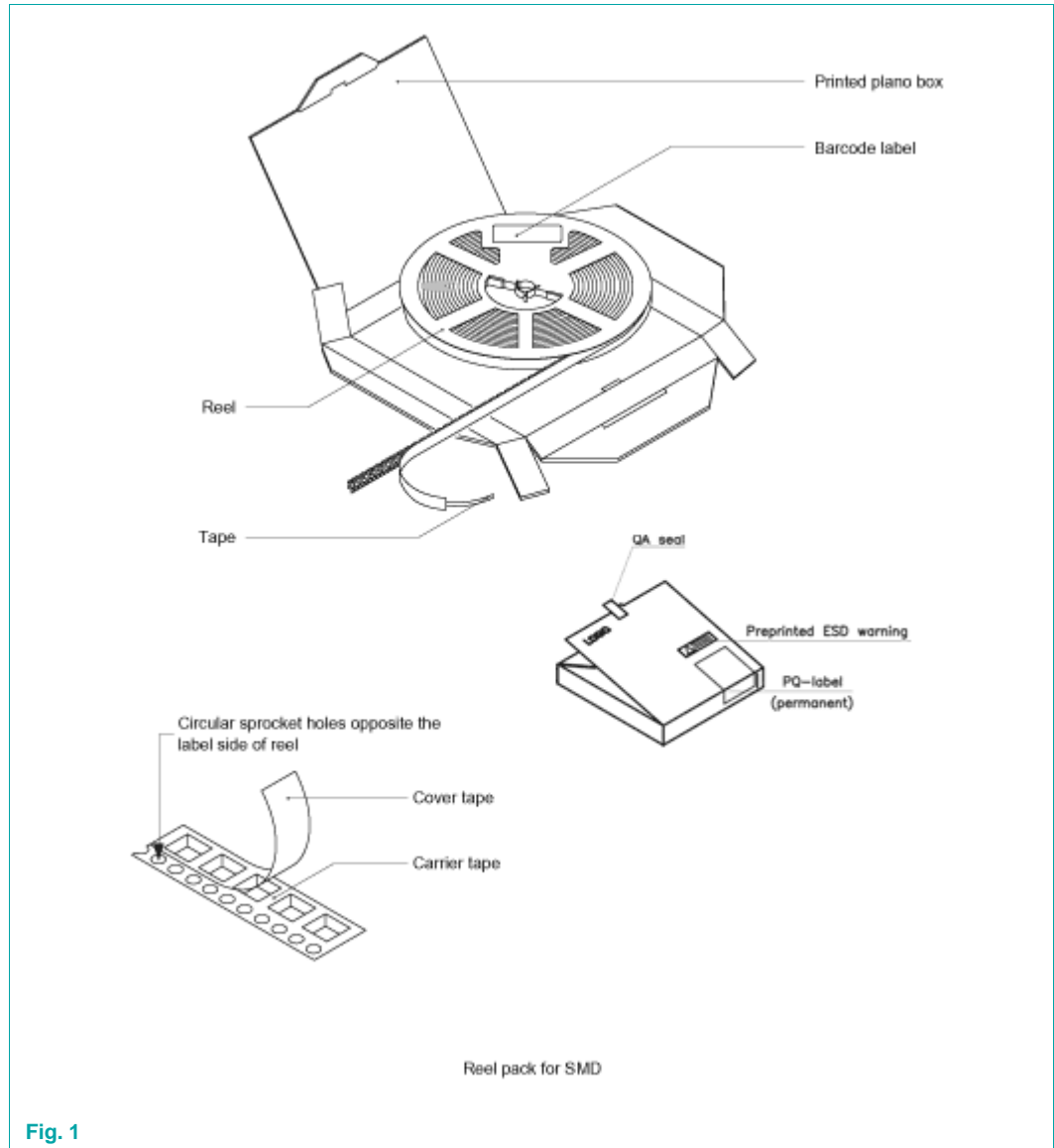
SOT337-1

Standard product orientation 12NC ending 118

Rev. 01 — 28 July 2011

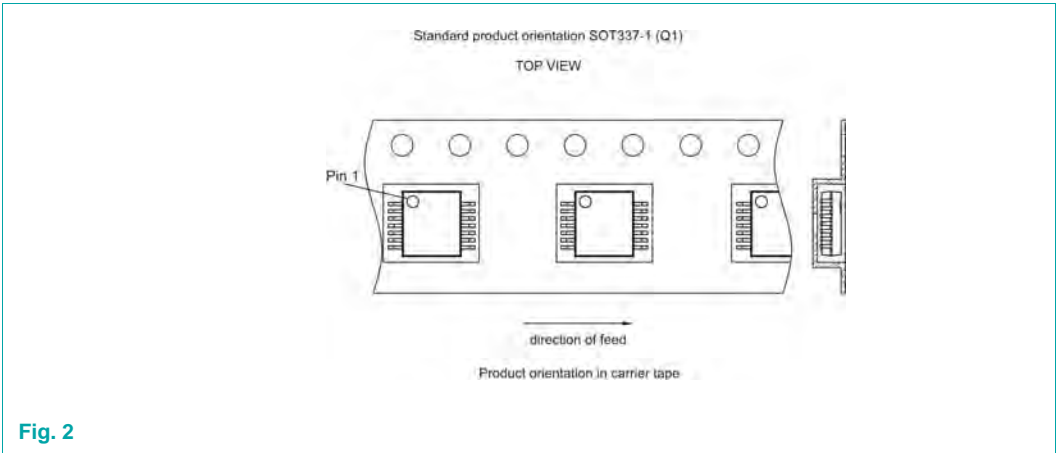
Packing information

1. Packing method

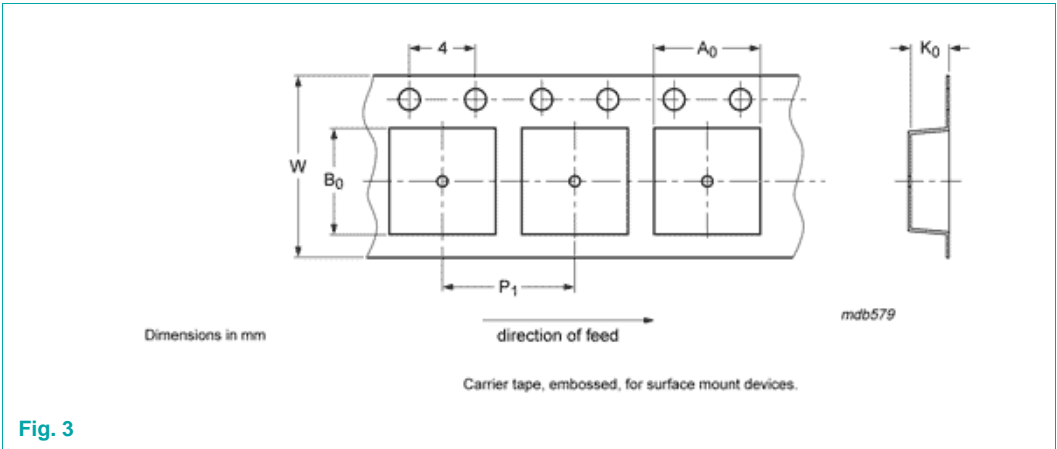


Package version	12NC ending	Reel dimensions d x w (mm)	SPQ/PQ (pcs)	Reels per box	Outer box dimensions l x w x h (mm)
SOT337-1	118	330 x 16	2000	1	339 x 335 x 25

2. Product orientation

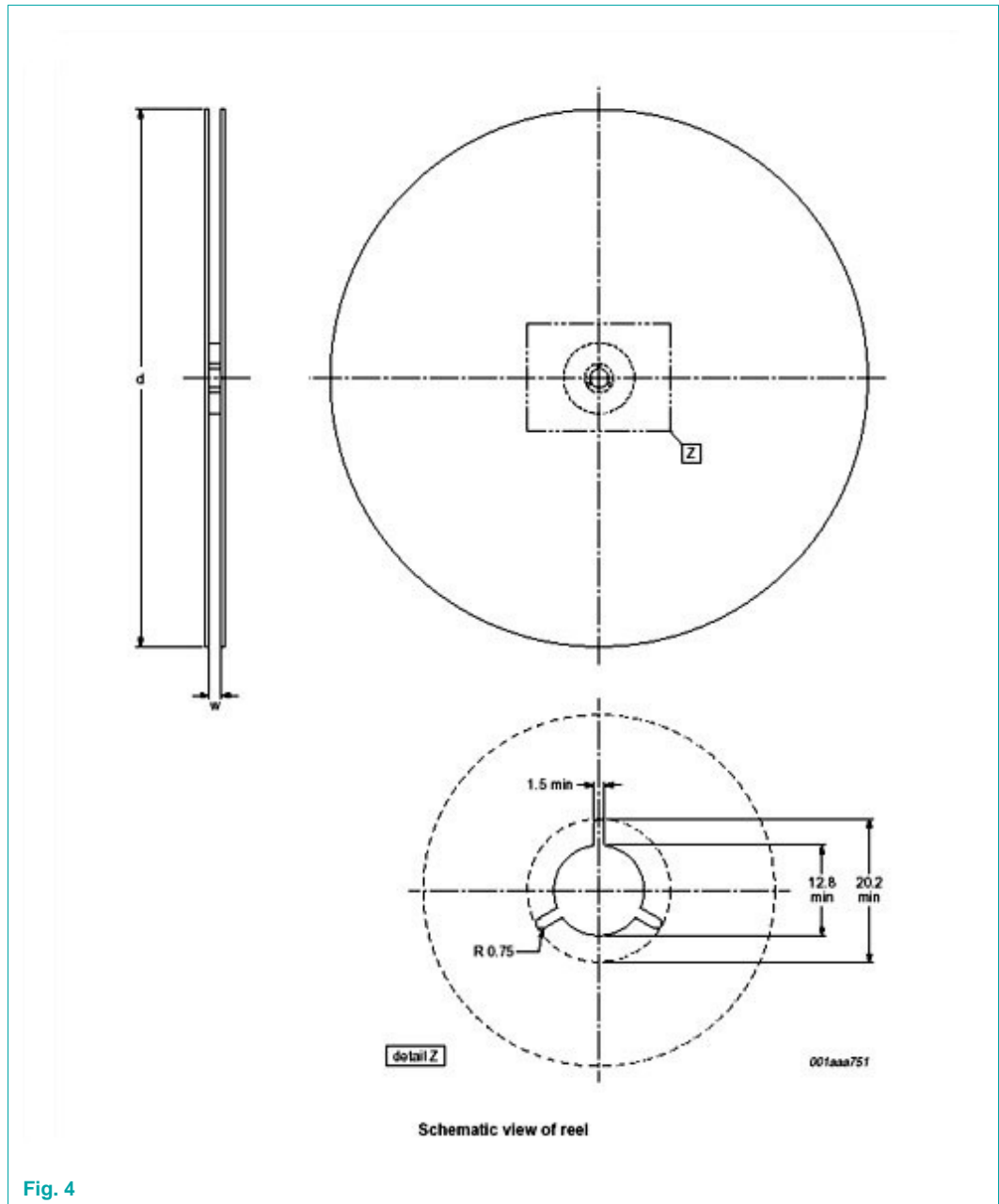


3. Carrier tape dimensions



A ₀ (mm)	B ₀ (mm)	K ₀ (mm)	T (mm)	P ₁ (mm)	W (mm)
8.2	6.6	2.5	-	12.0	16

4. Reel dimensions



Package version	12NC ending	Reel dimensions d x w (mm)	SPQ/PQ (pcs)
SOT337-1	118	330 x 16	2000

5. Barcode label box and reel information

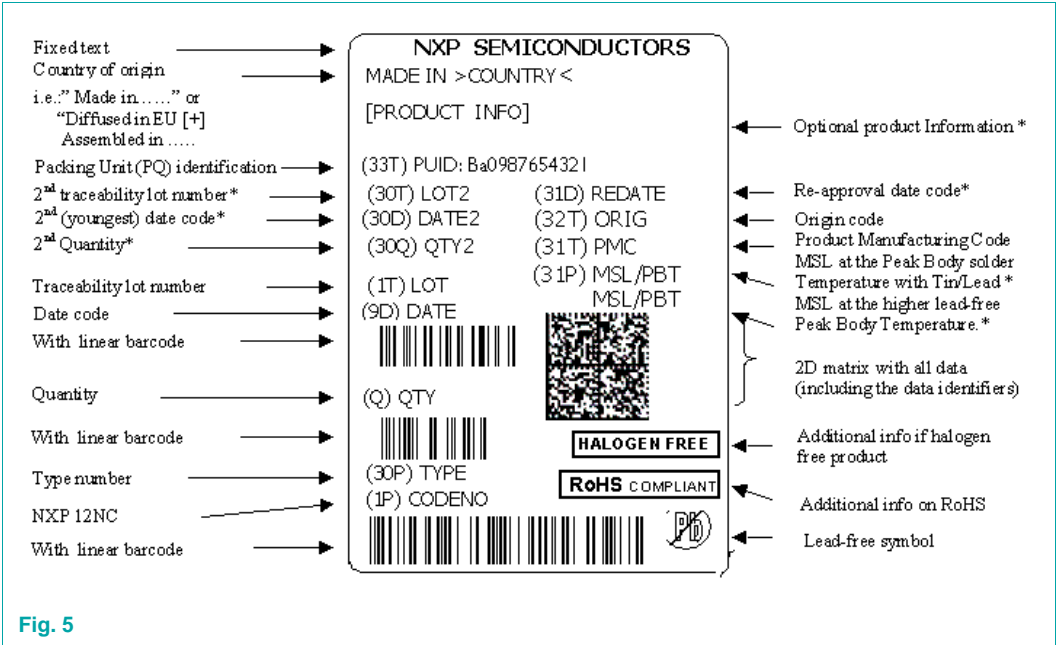


Fig. 5

Label dimensions
l x w (mm)
100 x 75